



CIPHE

Chartered Institute of Plumbing
and Heating Engineering

YOUR MEMBERSHIP GUIDE **2026**

ciphe.org.uk

ABOUT YOUR CIPHE MEMBERSHIP

The Chartered Institute of Plumbing and Heating Engineering (CIPHE) is the professional body for the plumbing and heating profession. Established in 1906, with over 7,500 members worldwide, the CIPHE guides and supports members throughout their career from student to retirement.

As a member of the CIPHE, there is a wide range of benefits and services available to ensure you are represented, to keep your skills and knowledge up to date and to help you to promote and support your professional services and your business.

In this guide you'll find information on:

- 03 CPD tools & services
- 04 CIPHE Technical Helpline
- 05 CIPHE Academy
- 06 CIPHE guides and resources
- 07 CIPHE website
- 08 Our Industrial Associates
- 13 CIPHE membership categories
- 18 Get the right membership for you
- 20 Engineering Council registration
- 21 WaterSafe® Approved Contractor
- 22 Further awards
- 23 Find a plumber
- 24 Free legal advice
- 25 Working to represent you
- 26 CIPHE in the media
- 27 Get involved



CPD TOOLS & SERVICES

Stay updated on the latest technical, legislative and CPD news, and easily manage your CPD requirements.

- Quarterly *P&H Engineering* journal
- CIPHE Academy, through your online account (see page 05)
- CIPHE Bookshop (see page 06)
- Free-to-download technical guidance, through your online account
- Techtalk and Smarttalk access
- Live Member-only webinars
- Record and track your CPD, through mycareerpath®

CIPHE TECHNICAL HELPLINE

**Run into trouble on a job?
Call for guidance and support.**

Contact technical support on **07706 322 244**
or **01708 463 117** for assistance with:

- Interpretation of Building Regulations or Water Regulations legislation
- Installation advice and queries on Customer Design Requirements
- Drainage
- Overcoming onsite problems
- Heat loss calculations
- Legionella risk assessment
- And more

No reply? Leave a clear voicemail stating your name, membership number and contact number and a member of the technical team will respond as soon as possible.



CIPHE ACADEMY

From Trainee to Fellow, Apprentice to Master Plumber, there's something for everyone.

CIPHE Academy offers a comprehensive learning experience tailored to the diverse needs and interests of our members. Access the Academy through your online membership account.

With over 60 courses across various categories, including:

- Water safety
- Heating
- Drainage
- Hot and cold water services
- Renewables and low carbon

The screenshot displays the CIPHE Academy website. At the top, the header includes the CIPHE logo and the text "Chartered Institute of Plumbing and Heating Engineering" and "Proud to be a professional". Below the header, the main content area is titled "CIPHE Academy" and contains introductory text about the academy's mission and membership benefits. A user profile for "Demo Three" is visible in the top right corner. The main content area is divided into sections for "Courses" and "Last visible courses". The "Courses" section features a grid of course cards with images and titles such as "Water Safety", "Heating", "Drainage", "Hot and Cold Water Services", and "Renewables and Low Carbon". The "Last visible courses" section displays a table of course details.

Course Title	Program	Course Start Date	Course End Date
Gasfitting: gas services for boiler, gas fires, gas cookers, gas ovens, gas grills, gas hob, gas water heaters, gas central heating, gas radiators	Gasfitting	28 May 2025	17 Jul 2025
Advanced plumbing: drainage and sanitation systems	Advanced plumbing	28 May 2025	18 Feb 2026
Drainage: CIPHE ACM	Drainage	28 May 2025	18 Feb 2026
Gasfitting: Gasfitting: Boiler and Central Heating	Gasfitting	28 Jun 2025	17 Sep 2025
Gasfitting: Alpha 1	Gasfitting	18 May 2025	17 Sep 2025
Gasfitting: Alpha 2	Gasfitting	8 Jun 2025	8 Sep 2025

To find out more, log in to your online membership account at ciphe.org.uk

CIPHE GUIDES AND RESOURCES

Explore our range of practical resources to support your professional development.



The CIPHE shop features:

■ Plumbing and heating engineering design and regulation books, including:

- *The future of home heating – A consumer guide*
- *Domestic heating* (Design guide)
- *Legionella risk assessing in domestic properties* (Insight guide)
- *Low-temperature heating and hot water qualification* (Design guide)
- *An introduction to sheet lead weatherings* (Insight guide)
- *Domestic heating and hot water system* (Design guide)

The CIPHE shop



Scan the QR code to see our range of exclusive member downloads, discounts and merchandise.

■ Digital downloads

■ CIPHE-branded materials, including:

- A range of vehicle stickers
- Letterhead/stationery stickers
- CIPHE lapel badges
- CIPHE/WaterSafe Certificate of Work Pads (for WaterSafe registered Members only).

Find out more at ciphe.org.uk



CIPHE WEBSITE

Manage your membership quickly and easily online.

Through your Member homepage, you can:

- Renew and manage your CIPHE membership and personal details
- Apply for WaterSafe Approved Contractor status
- Advertise your business to customers on the CIPHE Business Directory
- Catch up on the latest industry news and advice
- Register your interest in Engineering Council Accreditation

OUR INDUSTRIAL ASSOCIATES

Together, we're building a stronger industry

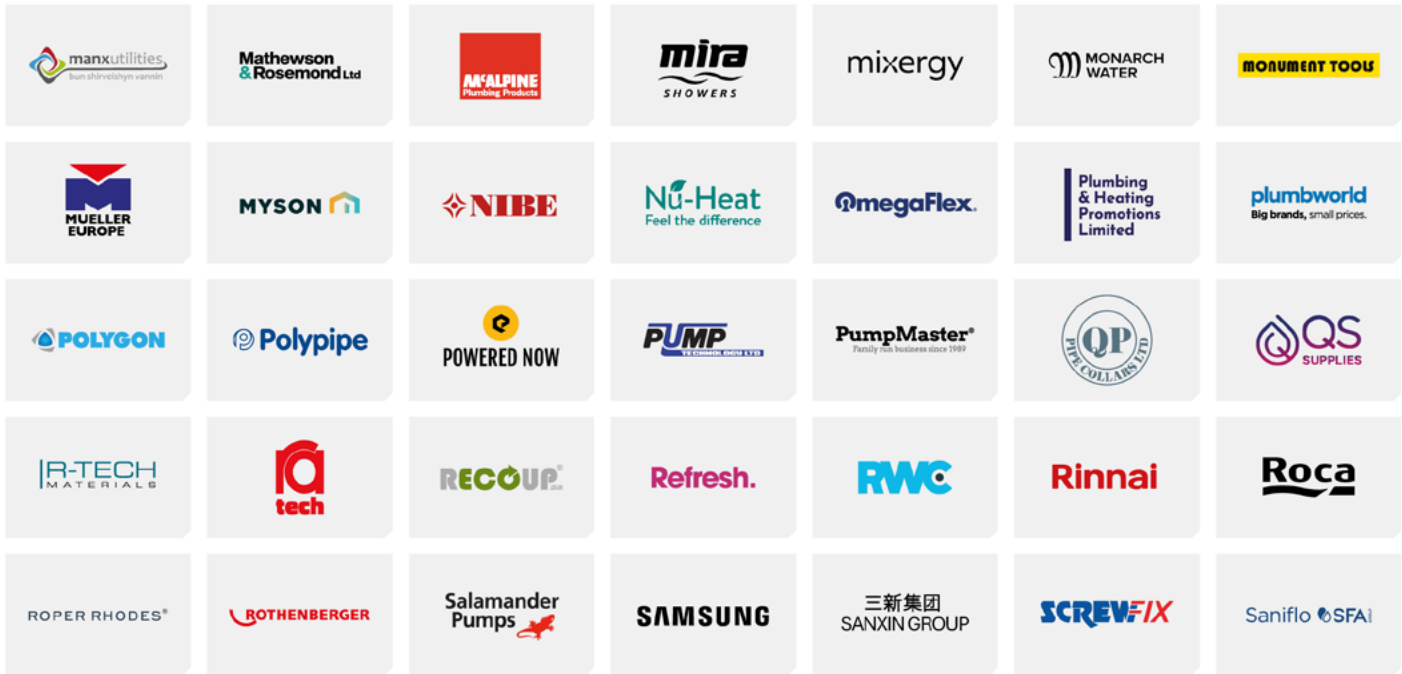


Backed by some of the biggest names in plumbing and heating, our Industrial Associates help us deliver the guidance, innovation and support that keep our members ahead.

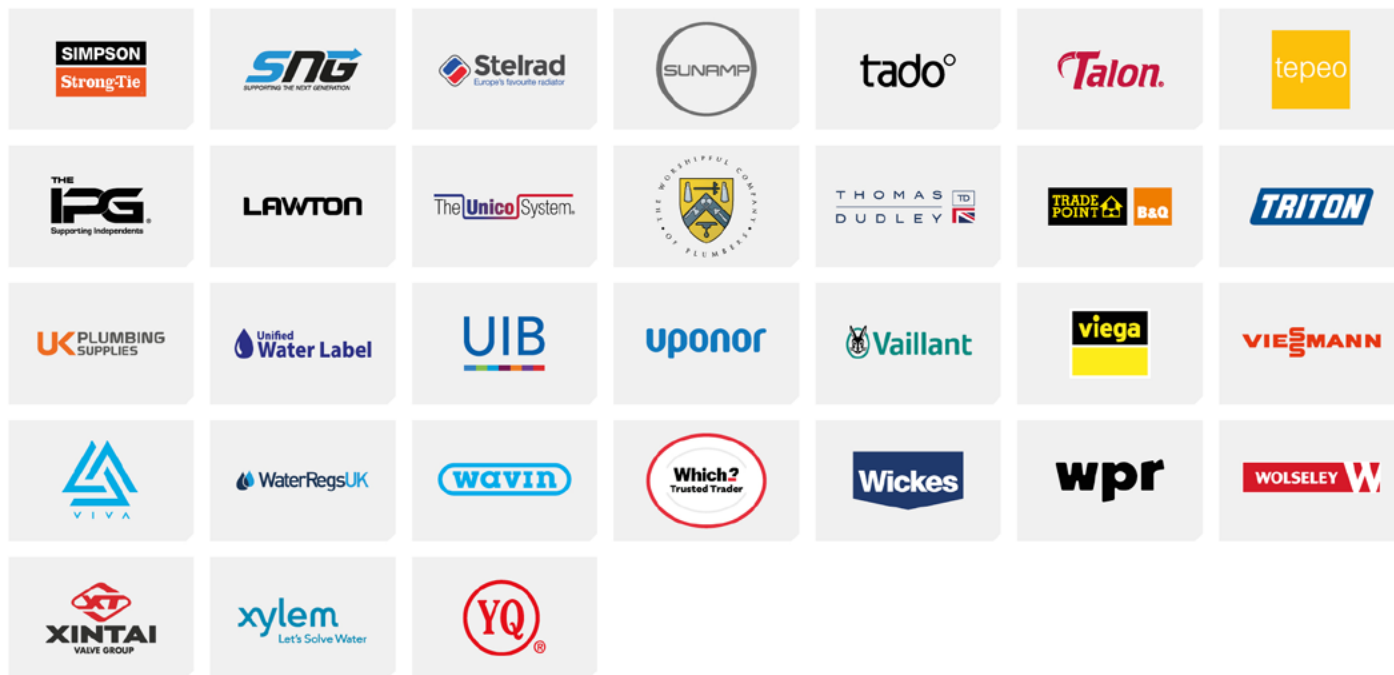
Scan the QR code to explore the CIPHE Industrial Associates Directory



Together, we're building a stronger industry



Scan the QR code to explore
the **CIPHE Industrial
Associates Directory**



**We make each
other stronger**

**Boost your company's reputation,
connect with industry leaders, and
access exclusive resources by becoming
a CIPHE Industrial Associate.**

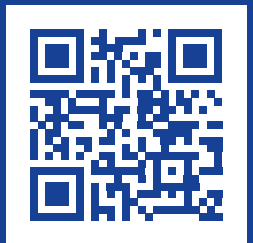
**Join today at ciphe.org.uk and showcase
your commitment to excellence,
innovation, and the highest standards
in plumbing and heating engineering.**



CIPHE SHOP



Scan the QR code
to see our range of
exclusive member
downloads, discounts
and merchandise



CIPHE MEMBERSHIP CATEGORIES

Voting membership categories	2026 Membership rate	Entrance/transfer fee	Total currently payable
Fellow (FCIPHE)*	£246	£75	£321
Member (MCIPHE)*	£177	£75	£252
Associate (ACIPHE)*	£177	£75	£252
Upgrade to Member	–	£60	£60
Upgrade to Fellow	–	£60	£60
Non-voting membership categories			
Trainee	£18	–	£18
Affiliate	£75	£30	£105
Companion (Comp CIPHE)	£126	£60	£186
Additional services available			
CIPHE Premium Business Directory Listing	£60 (plus VAT)	–	£72
Registered Plumbing/Heating Company	£287.50 (plus VAT)	–	£345
Organisation membership categories			
Industrial Associate <£2m annual turnover	£504	£150	£654
Industrial Associate >£2m annual turnover	£693	£207	£900
Approved Training Centre (Industrial Associate)	£834	£150	£984
Approved Training Centre (College) entry level	£225	–	£225
Approved Training Centre (College) professional level	£750	–	£750

*Reduced fees for those not working available upon application

Get endorsed

by the UK's consumer champion

Which?
Trusted Trader

CIPHE MEMBERS GET 50% OFF

Enjoy half price membership for your first 6 months.*

Scan this QR code to find out more

Or visit for-traders.which.co.uk/ciphe



*Eligibility criteria and an initial non-refundable assessment fee apply.

Wickes

TradePro

Save 10% every time you shop with Wickes TradePro



Save 10% every time you shop, in store and online with no minimum spend



Download the TradePro app to start saving and shop quickly and easily



Fast track sign up



TradePro Rewards - exclusive members access to offers, giveaways and more

Scan to sign up



Wickes TradePro scheme is open to tradespeople resident in the UK only. Registration and ID required. Online account required for online use. Present unique TradePro barcode at the till (or discount code at online checkout). Excludes delivery & gift vouchers. Discount on Bespoke kitchen & bathrooms must be claimed in person by the member. Cannot be used with other discount vouchers, codes or coupons. 1 x barcode per customer and per transaction. T&Cs apply - see <https://www.wickes.co.uk/trade/terms-conditions>.

Protect your business

Using Marsh Commercial — CIPHE's recommended insurance broker

With global reach and local expertise, we offer tailored, competitive insurance solutions — including international coverage — to safeguard your livelihood, team, and reputation.

As CIPHE's recommended insurance broker, we understand your membership requirements which helps make sure you remain compliant and well protected.

Plus, enjoy a FREE, no-obligation business insurance review today to see if we can improve your cover, service, and save you money.



call 0330 828 6279 or visit
www.marshcommercial.co.uk/CIPHE.html



This is a marketing communication.

Marsh Commercial is a trading name of Marsh Ltd. Marsh Ltd is authorised and regulated by the Financial Conduct Authority for General Insurance Distribution and Credit Broking (Firm Reference No. 307511). Copyright © 2025 Marsh Ltd. Registered in England and Wales Number: 1507274, Registered office: 1 Tower Place West, Tower Place, London EC3R 5BU. All rights reserved.



10% OFF

AT TRADEPOINT & B&Q*

FOR CIPHE MEMBERS

Get the job done for less.



*Excludes delivery, gift vouchers, concessions, Amazon products, supplier-quoted projects, installations and made-to-measure products. Cannot be used in conjunction with any other voucher or customer discount card.



GET THE RIGHT MEMBERSHIP FOR YOU

Tailored to your qualifications and experience.

Enhance your career development by upgrading your membership as you become more skilled. As an international organisation, we recognise a wide variety of qualifications for membership, but broadly speaking the requirements are as follows:

Trainee | £18

Currently studying for an approved academic qualification in a plumbing or heating discipline, at an accredited training centre.

Affiliate | £75

Has attained either Level 2 Technical Certificate in Basic Plumbing Studies, or full NVQ Level 2, but is still gaining sufficient practical experience.

Associate (ACIPHE) | £177

Is a recently qualified NVQ Level 3 plumbing and heating course graduate, or holds full a NVQ Level 2 plus relevant post-qualification experience, or City & Guilds Craft Certificate (three years minimum experience required, including one year post-NVQ).

Or no formal qualifications, but extensive practical experience supported by references and assessment through a Professional Standards Inspection.

Member (MCIPHE) | £177

A minimum of full NVQ Level 3, or City & Guilds Advanced Craft Certificate, with appropriate practical experience (five years' minimum experience required).

City & Guilds Craft Certificate plus extensive practical experience, and sufficient professional development (i.e. Water Regulations/Oftec/manufacturer's training courses).

Has at least five unbroken years as an Associate member of the CIPHE, with related professional experience and documented CPD.

Find out more about the different membership categories by contacting us on **01708 463116** or **membership@ciphe.org.uk**

Fellow (FCIPHE) | £246

The highest category of individual membership. A Fellow will be employed in a senior managerial position (i.e. consultant, specialist, technical manager) and will be registered with the Engineering Council as EngTech, IEng or CEng. A Fellow can provide evidence of advancing the cause of the CIPHE or the wider plumbing and heating industry. Further information regarding this category of membership is available through the CIPHE Membership Department.

Companion | £126

Open to anyone who is connected with the plumbing and heating industry and supports the work of the CIPHE.

Post-nominals

A significant part of the value of membership is in the professional recognition of the skills and knowledge you have acquired. For this, the CIPHE is entitled to award designatory letters to those who satisfy the requirements for Associate, Member and Fellow categories of membership. Not only is this important for your status, it also sends out a clear message to the general public and industry of the achievement and value of being a member of the CIPHE.

Registers of Plumbers and Heating Professionals

Associates, Members and Fellows of the CIPHE can add their name to the Register of Plumbers and Heating Professionals (subject to qualification, certifications, experience and CPD evidence), and extend their Post-Nominals to include the RP or RHP status at no extra cost.

Get in touch with the membership team

For new membership applications, upgrades or transfers, registration with the Engineering Council, changes in contact details or payment of subscriptions please email membership@ciphe.org.uk or call on 01708 463116.

- Are you on the correct membership category?
- Have you achieved further qualifications?
- Gained significant additional experience?
- Been on your current membership category for five years or more?

If the answer to any of the above is 'yes', then please call our membership team on 01708 463116 to enquire about upgrading today.

ENGINEERING COUNCIL REGISTRATION

Gain international recognition for your competence and commitment.

As a licensed Professional Engineering Institution, CIPHE can register suitably qualified or experienced members with the Engineering Council.

The Engineering Council sets and maintains the internationally recognised standards of professional competence and ethics that govern the award and retention of the titles.

This ensures that employers, government, and wider society, both in the UK and overseas, can have confidence in the knowledge, experience and commitment of professionally registered engineers and technicians.

Visit the Engineering Council section of ciphe.org.uk for more information or to register your interest online.

Registration as an Engineering Technician, Incorporated Engineer or Chartered Engineer brings many benefits, including:

- Recognition of your expertise and hard work
- Greater influence within your organisation and industry
- Higher earnings potential
- Improved career prospects
- Access to life-long learning

Scan the QR code to find out about **registering with the Engineering Council**



WATERSAFE® APPROVED CONTRACTOR



The accreditation for approved plumbers — demonstrating the highest professional standards.

A great opportunity to grow your business, WaterSafe is an online hub and search facility that has been developed by the water industry for approved plumbers and plumbing companies to help cut confusion for customers, enabling them to find the best-qualified plumbers who meet the highest standards in business.

Membership is free to all CIPHE members on the Register of Plumbers, and who have Approved Contractor Status with the CIPHE.

Apply **online** or contact on membership@ciphe.org.uk or by calling **01708 463 116**.

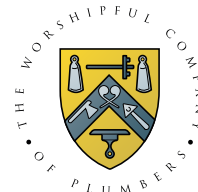
Members must also:

- Have passed recognised assessment on knowledge of Water Fittings Regulations (Scotland Byelaws).
- Hold public/products liability insurance with a minimum indemnity of £2 million.
- Undertake at least five hours of Water Regulations-related CPD per year.
- Successful members can add WaterSafe branding to their vehicles and stationery and will be issued with a WaterSafe identity card.

Scan the QR code to find out about **becoming WaterSafe registered**



FURTHER AWARDS



The CIPHE is proud to be a partner in the prestigious awards of Apprentice Plumber, Journeyman Plumber and Master Plumber, in conjunction with the Worshipful Company of Plumbers and City & Guilds. These awards give further recognition to those who demonstrate high standards of skill and expertise in the field of plumbing. The requirements for each are as follows:

Conditions for the Apprentice Plumber Certificate

In order to apply for the Apprentice Plumber Certificate the following minimum requirements must be met and necessary evidence provided to support the application:

be qualified to S/NVQ Level 2 or equivalent;

be enrolled on a S/NVQ Level 3 Plumbing Course or equivalent;

be an Affiliate or Associate Member of the CIPHE;

the applicant shall have been engaged in the plumbing industry for a minimum of three years



Further information on all three of the above awards can be found at ciphe.org.uk

Conditions for the Journeyman Plumber Certificate

In order to apply for the Journeyman Plumber Certificate the following minimum requirements must be met and necessary evidence provided to support the application:

be qualified to City & Guilds Ordinary Level /S/NVQ Level 3 or equivalent;

be an Associate (ACIPHE) or Member (MCIPHE) of the CIPHE;

the applicant shall provide evidence of employment in a formal Apprenticeship or written, verified statements of workplace experience as required for the award of S/NVQ Level 3 in Plumbing;

the applicant shall have been engaged in the plumbing industry for a minimum of four years

Conditions for the Master Plumber Certificate

In order to apply for the Master Plumber Certificate the following minimum requirements must be met and necessary evidence provided to support the application:

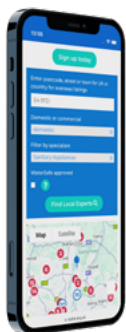
be a Member (MCIPHE) or Fellow (FCIPHE) and Registered Plumber (RP) of the CIPHE;

be qualified to City & Guilds Advanced Craft level/S/NVQ Level 3 or equivalent and be accepted for City & Guilds Licentiatehip;

be registered as either an Engineering Technician, Incorporated or Chartered Engineer with the Engineering Council;

the applicant has been engaged in the industry for at least 10 years

Please note: Apprentice, Journeyman and Master Plumber Certificates are all only valid whilst the person remains a member of the CIPHE.



FIND A PLUMBER

Get discovered by thousands of customers each year, with both national and international listings available. Choose from two membership directory options – Essential and Premium – designed to maximise your business visibility.

Reach more customers with the right CIPHE directory listing

Essential listing

Included with ACIPHE, MCIPHE, and FCIPHE standard membership

With Essential, your business benefits from:

- Business name listing
- Professional specialisms highlighted
- Full contact information
- Proximity display to service users
- Indicators for Registered Plumbing/Heating Company status
- Visibility of Approved Contractor Person status and WaterSafe registration, if applicable

Premium listing

Standard membership plus £60 +VAT premium listing fee

Upgrade to Premium to enhance your listing with:

- All the features of an Essential listing
- Eye-catching red premium frame around your listing
- Priority placement in listings
- Additional business information section
- Option to upload your logo for brand recognition

FREE LEGAL ADVICE

LAWEXPRESS
Legally speaking

Law Express

We've partnered with Law Express to give our members access to free telephone legal advice and guidance.

Law Express provides advice on all sorts of problems and queries including:

- Employment issues within the workplace
- Commercial and company law
- Data protection (GDPR)
- Housing (owner occupied and rented)
- Consumer issues
- Family and relationship difficulties
- Personal injury
- Road traffic accidents and motoring offences
- Small claims court proceedings
- Pensions, tax and welfare benefits
- Neighbour issues
- Criminal law
- Power of attorney, wills, probate and bereavement.

Free telephone legal advice and guidance

The Law Express legal helpline was founded over 20 years ago to provide high-quality, impartial and professional advice to the people accessing the service. All Law Express advisors and call handlers are based in the UK (and cover all UK jurisdictions). When you call Law Express, a call handler will ask you some questions about the nature of your enquiry so that they can match you to the best adviser.

An experienced legal advisor who specialises in the area of law that you need will call you back, usually within two hours. If you wish to speak to an advisor straight away the call handler will do their best to help you.

Call the Law Express helpline

Phone 01275 405 600 to speak to an advisor.

This will be answered as "Chartered Institute of Plumbing and Heating Engineering legal line"

Lines are open from 8am–8pm, Monday–Friday and 9am–12pm, Saturday–Sunday (GMT).

Please tell the call handler that you're a CIPHE member.

WORKING TO REPRESENT YOU

The CIPHE works closely with Government and other agencies to ensure that the industry's voice is heard and your skills are recognised. We promote the value of the public health role performed by plumbing and heating engineering specialists.



The Engineering Council

The standards setting body and licensing organisation for all Professional Engineering Institutions. With over 220,000 registered Engineering Technicians, Incorporated Engineers and Chartered Engineers, it is the voice for the engineering profession. The CIPHE is licensed by the Engineering Council to award registration to appropriately qualified members across all three categories of registration which carry the designatory letters, EngTech, IEng and CEng. Join more than 1,000 members who have already registered with the Engineering Council.



The Construction Industry Council

The Construction Industry Council (CIC) is the representative forum for the professional bodies, research organisations and specialist business associations across the construction industry. CIC occupies a key role within the UK construction industry, providing a single voice for professionals in all sectors of the built environment through its collective membership of 500,000 individual professionals and more than 25,000 firms of construction consultants.



The World Plumbing Council

The World Plumbing Council (WPC) is an international organisation which develops and promotes the image and standards of the plumbing industry worldwide. Its mission is: "To promote the role of plumbing in improving public health and safeguarding the environment, by uniting the World Plumbing Industry, for the benefit of all."

Any questions?

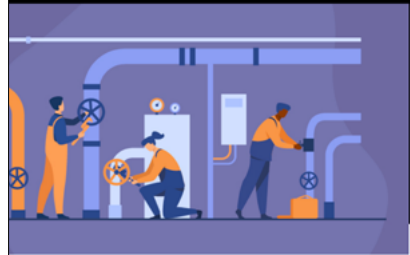
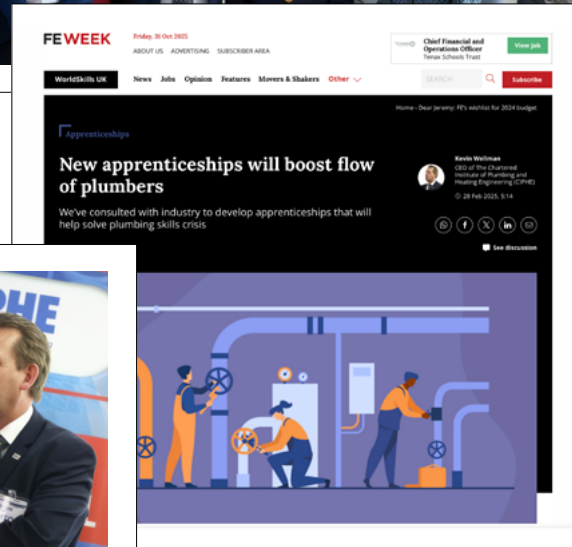
Contact us on **01708 472791**
or membership@ciphe.org.uk

CIPHE IN THE MEDIA

CIPHE has had strong coverage across leading trade and education media this year, reinforcing its role as the professional voice of the plumbing and heating industry.

Stories on new apprenticeship standards and the skills gap have featured in *Gas Engineer*, *HPM*, *FE News*, *Installer* and *H&V News*, highlighting CIPHE's work to tackle workforce shortages, support training reform and promote career opportunities.

Coverage around education, regulation and professionalism also continues to grow, reaching everyone from manufacturers and suppliers to installers and apprentices.



GET INVOLVED

For more information about any CIPHE committee get in touch with the membership department membership@ciphe.org.uk

Share your expertise and help shape CIPHE's work.

Technical Strategy Group

This operates as an independent technical and professional focal point and is the leading authority for the plumbing and heating industry, providing technical standards, guidance and expertise, alongside educational and technical innovation.

Includes specialist subgroups focussed on:

- Controls
- Drainage
- Heating
- Renewables and low-carbon
- Water safety
- Water services

Membership Registration Committee

For all matters membership and Engineering Council related, including transfers and upgrades and applications for registration.

Part of the work of the Election and Enrolment Committee also includes authorising Professional Standards Inspections for membership.

If you are already registered with the Engineering Council, contact us to serve as an interviewer or assessor for new applications.

If you are interested in joining this committee you should be registered with the Engineering Council at EngTech, IEng or CEng level and will need to submit a copy of your CV.

Membership ambassadors

Are you looking for a voluntary role where you can help instil the importance of professionalism and competence into the industry's newest recruits? If you are the chatty, confident type who doesn't mind standing up to talk in front of others, or striking up conversations with those you don't know and you have the free time to spare a couple of hours a month for your professional body, then an ambassador role is for you.

We are always on the lookout for volunteers to assist with membership recruitment, via your local colleges, educational bodies and exhibitions and even merchants. If you have the skills to help promote the CIPHE and the benefits of belonging to the professional body for the plumbing and heating industry, please get in touch.

Education Strategy Group

For all matters education and training related, including developments on the new apprenticeship standards and qualifications 'Trailblazer'.

Instrumental in establishing the CIPHE position on educational matters, pre- and post-qualification, roles on this committee are ideally suited to those already involved in the training arena.



The Chartered Institute of
Plumbing and Heating Engineering

The Chartered Institute of Plumbing & Heating Engineering
3 Capricorn Centre
Cranes Farm Road
Basildon
SS14 3JA

Telephone: **+44 (0)1708 472791**

Email: **info@ciphe.org.uk**

 **/CIPHE.UK**

 **@TheCIPHE**

 **/Chartered Institute of Plumbing and Heating Engineering**

Proud to be a professional